

Sgarbossa ECG Criteria for LBBB

Concordant STE ≥ 1 mm	5 points
STD ≥ 1 mm in V1 – V3	3 points
Discordant STE ≥ 5 mm	2 points

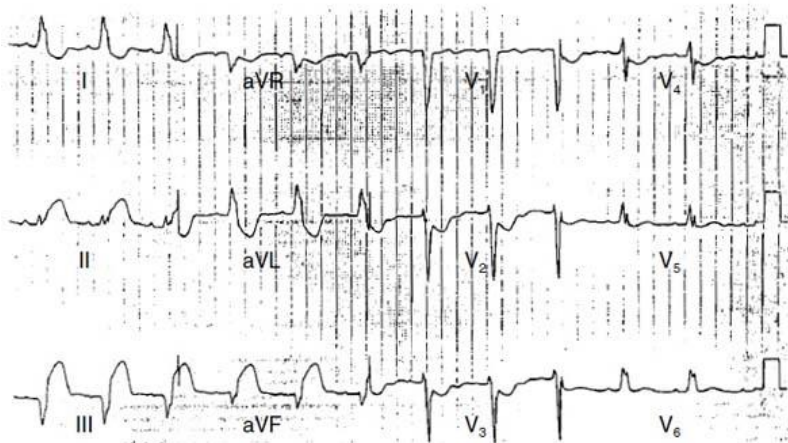


Figure 1. Electrocardiogram Meeting All Three Independent Criteria for the Diagnosis of Acute Myocardial Infarction in a Patient from the GUSTO Trial with Left Bundle-Branch Block.

The electrocardiogram shows ST-segment elevation of at least 1 mm that is concordant with the QRS complex (lead II), ST-segment depression of at least 1 mm in leads V₂ and V₃, and ST-segment elevation of at least 5 mm that is discordant with the QRS complex (leads III and aVF).